



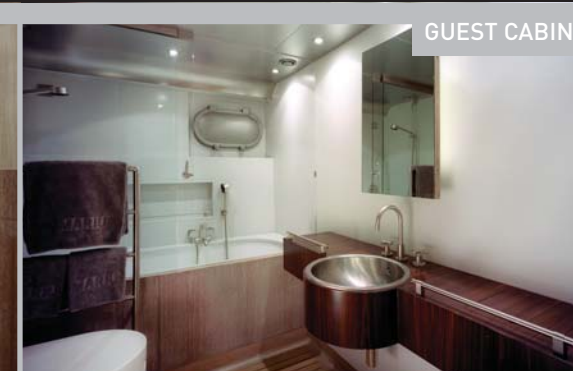
- Quantum Zero Speed Stabilisers
- Kalediscap on-demand AV system
- Wireless VSAT broadband
- Guest office
- Guest elevator to all decks



MARIU



SKY LOUNGE



GUEST CABINS



MAIN SALOON



MASTER SUITE





SKY LOUNGE AFT DECK



MAIN AFT DECK



SUN DECK

MARIU

2003 HULL n° F.65



BRIDGE



GALLEY



ENGINE ROOM

LENGTH:	49.9M	
BEAM:	9.5M	
DRAFT:	3.4M	
HULL:	HIGH TENSILE STEEL	
SUPERSTRUCTURE:	ALUMINIUM	
CLASSIFICATION:	LLOYDS REGISTER 100 A1 SSC "YACHT" MONOG6 LMC FULL MCA CODE COMPLIANCE	
MAXIMUM SPEED:	17.5 KNOTS	
CRUISING SPEED:	15 KNOTS	
RANGE:	4600 NAUTICAL MILES AT 14 KNOTS	
ACCOMMODATION:	OWNERS SUITE PLUS 5 GUEST DOUBLE BED CABINS (TWO WITH ADDITIONAL PULLMAN BEDS)	
CREW:	CAPTAIN PLUS 10 CREW	
LEISURE: EQUIPMENT	KNEE BOARDS WAKE BOARDS WATER SKIS INFLATABLE KAYAKS INFLATABLE BANANA INFLATABLE DOUGHNUTS GAME FISHING RODS INSHORE FISHING RODS SNORKELLING GEAR MOUNTAIN BIKES (3) WINDSURFER	KITEBOARD TENDERS: CHASE NOVURANIA 10M RIB 6.1 METRE RIB 4.0 METRE JET SKIES YAMAHA 1300 2008 MODEL (2) FITNESS: RUNNING MACHINE FREE WEIGHTS YOGA MATTS ROWING MACHINE

MARIU